

Custom Model Generation and Phenotyping

Generation

Targeted strategy in accordance with your needs

> 200 Transgenic and > 1300 Targeted mutagenesis projects

Chromosome Engineering

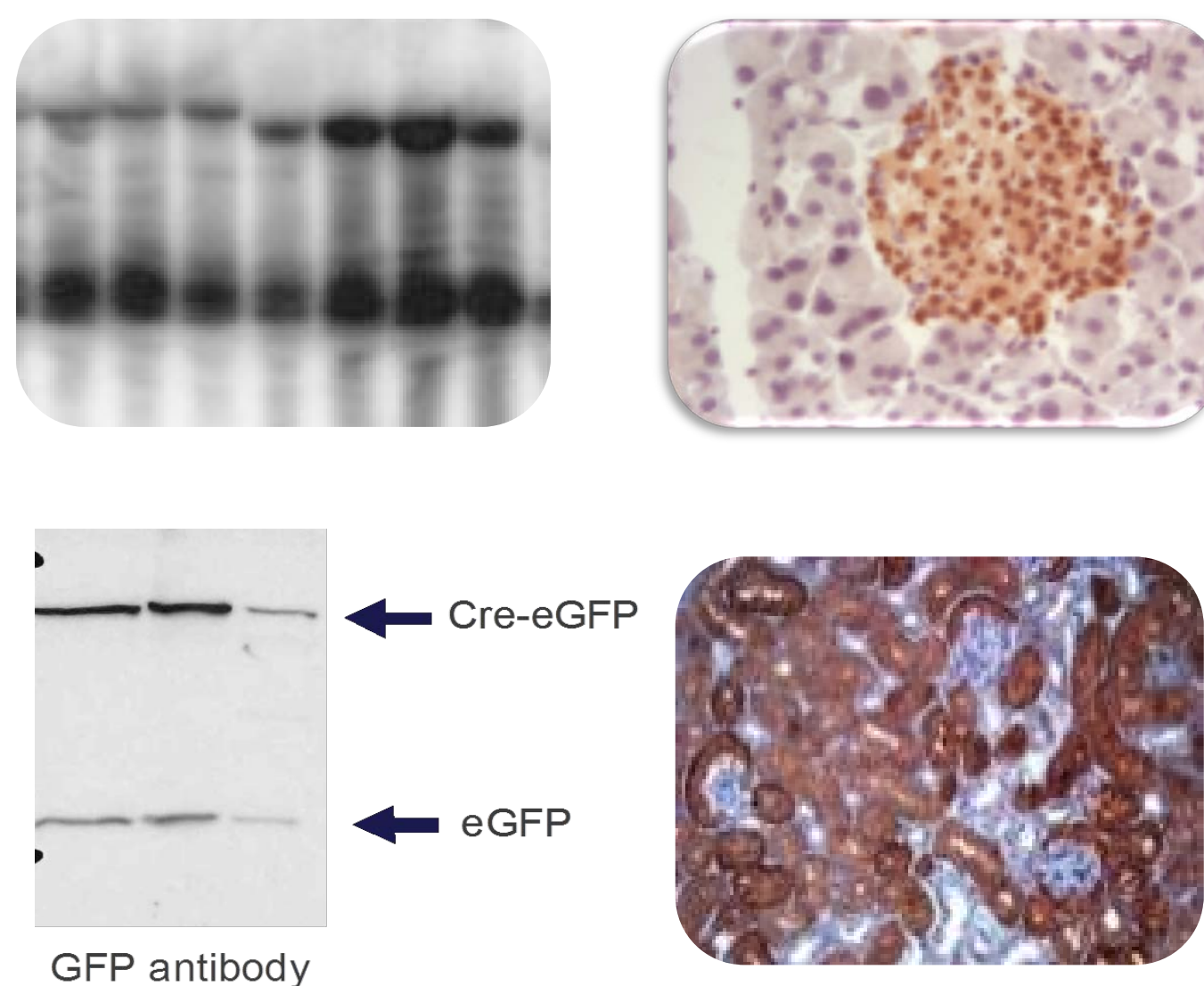
Nuclease genome editing (CRISPR/Cas9)
NEW offer

Validation

Gene expression validation

Copy number determination

Functional validation

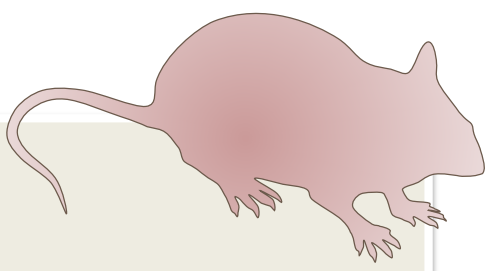


Phenotyping

150-200 projects / year

~ 12 therapeutic areas

8 Platforms

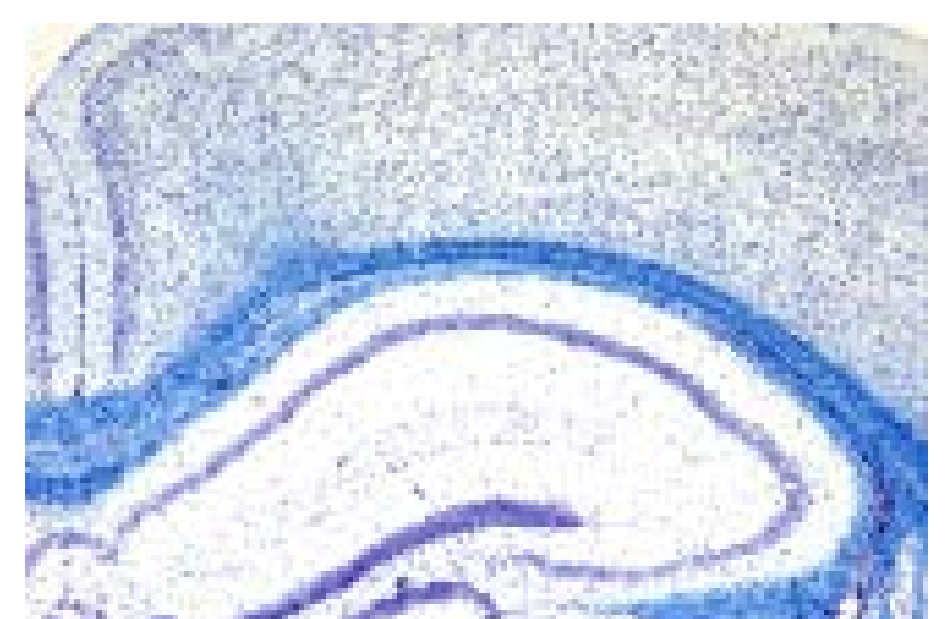
In vivo disease models 

More than 250 assays available for various functions

Right answer to your scientific project

Therapeutic areas

- Psychiatry, Neurology
- Cardiac system
- Vascular system
- Lung exploration functions
- Energy metabolism exploration
- Glucose homeostasis
- Bone exploration
- Intestinal function
- Renal function
- Immunology, inflammation
- Development and growth



Drug screening:

- Target identification / validation
- Risk assessments/Side effects

Imaging:

- Preclinical in vivo imaging (radiographic, radioisotopic, photoacoustic)
- Imaging under BSL3 conditions (optic, confocal..)

In vivo disease models

- Lung disease, asthma, inflammation
- Intestinal bowel disease (~DSS), peritonitis
- Hypertension, Cardiac hypertrophy
- Diet induced atherosclerosis
- Diet induced obesity, Diabetes
- Memory and learning deficits, Alzheimer, ...

